



## WX5600-T0

### Dual-Band Wireless AX6000 Gigabit Extender

The Zyxel WX5600-T0 Dual-Band Wireless AX6000 Gigabit Extender enables carrier-grade performance. As a key component of the Zyxel MPro Mesh® Solutions, the Zyxel WX5600-T0 offers your customers an unmatched experience with higher speeds, greater capacity and seamless coverage.

#### Benefits

##### Superior wireless experiences with lag-free connectivity

Offering speeds up to 4800 Mbps\* with 5 GHz 4x4 802.11ax and 1200 Mbps\* with 2.4 GHz 4x4 802.11ax, the Zyxel WX5600-T0 features beamforming technology to empower premium speed for multi-streaming data access and optimal WiFi experience without dead zones.

##### Premium MPro Mesh® for whole-home WiFi coverage

Featuring the EasyMesh fully compliant Zyxel MPro Mesh® Solutions, the WX5600-T0 enhances your subscribers' experience by providing self-adapting, easy-to-manage whole-home WiFi coverage, while reducing your service OPEX with mature remote management features and an in-house developed mobile app.

##### Superior interoperability boosts the efficiency of existing infrastructure

The WX5600-T0 works with compatible Zyxel gateways as part of an integrated mesh network or independently with third-party gateways, facilitating new deployments and ensuring optimized network performance.

Datasheet [WX5600-T0](#)



WiFi 6 (11ax) for superior performance and coverage



Zyxel MPro Mesh® Solutions (compliant with EasyMesh standards)



2.5GbE LAN ports for optimized bandwidth utilization



Remote management via TR-069 and TR-181



Zyxel-developed OPAL for superior flexibility and faster time to market



## 2.5GbE LAN port for extending premium fiber service

With two 2.5GbE LAN ports, the WX5600-T0 extends premium fiber service to satisfy subscribers' bandwidth-intensive applications with optimized bandwidth utilization.

## Remote management through TR-069/TR-181 reduces service expenses

Compliant with TR-069/TR-181 standards, the Zyxel WX5600-T0 significantly simplifies the complexities of deployment. You can process remote configuration, upgrade software, run diagnostics and provide management – all from your own customer support office.

## Seamless migration with OPAL software

The WX5600-T0 is available with Zyxel OPAL – our mature, modular software platform. The software incorporates a set of field-proven applications and allows you to easily manage your customer's premium services or seamlessly migrate and upgrade them to new technology – all with the advantage of reduced development time for you and great service for your customers.

# Specifications

## System specifications

### Wireless standards

- IEEE 802.11 a/n/ac/ax 5 GHz
- IEEE 802.11 b/g/n/ax 2.4 GHz

### Wireless speed

- Transmit/receive
  - 4800 Mbps\* for 5 GHz
  - 1200 Mbps\* for 2.4 GHz

### Wireless security

- WPA2-PSK/WPA3-SAE

### Wireless features

- Auto channel selection
- MU-MIMO and beamforming
- Video-grade QoS
- WiFi Protected Setup (WPS)
- WiFi Multimedia (WMM)
- MAC address filtering
- Multiple SSID up to 4
- AP/band steering

### System management

- HTTP/GUI
- TR-069/TR-181 remote management
- Remote firmware upgrade
- Dual images system recovery
- DHCP client and IGMP snooping
- MPro Mesh® management

### Operation mode

- AP/repeater

### MPro Mesh® management

- Pre-associated steering
- 5G/2.4G band steering
- Multi-AP roaming
- Band balancing
- Backhaul optimal

## Hardware specifications

### LAN

- Two 2.5GbE RJ-45 ports with auto MDI/MDIX support

### Wireless

- 5 GHz: four internal antennas
- 2.4 GHz: four internal antennas

### Buttons

- Power on/off
- Reset
- WPS

### LED indicators

- Power/system status
- Backhaul link quality
- WiFi
- WPS

## Power consumption

- 12 V DC 1.5 A
- 18 Watt max

## Physical specifications

- Item dimensions (WxDxH):  
128 x 40 x 128 mm  
(5.03" x 1.57" x 5.03")
- Item weight: 307.8 g (0.67 lb.)
- Packing dimensions (WxDxH):  
261 x 136.5 x 44 mm  
(10.27" x 5.35" x 1.73")
- Packing weight: 619.8 g (1.37 lb.)

## Environmental specifications

### Operating environment

- Temperature:  
0°C to 40°C (32°F to 104°F)
- Humidity:  
10% to 90% (Non-condensing)

### Storage environment

- Temperature:  
-30°C to 70°C (-22°F to 158°F)
- Humidity:  
10% to 95% (Non-condensing)

## Certification

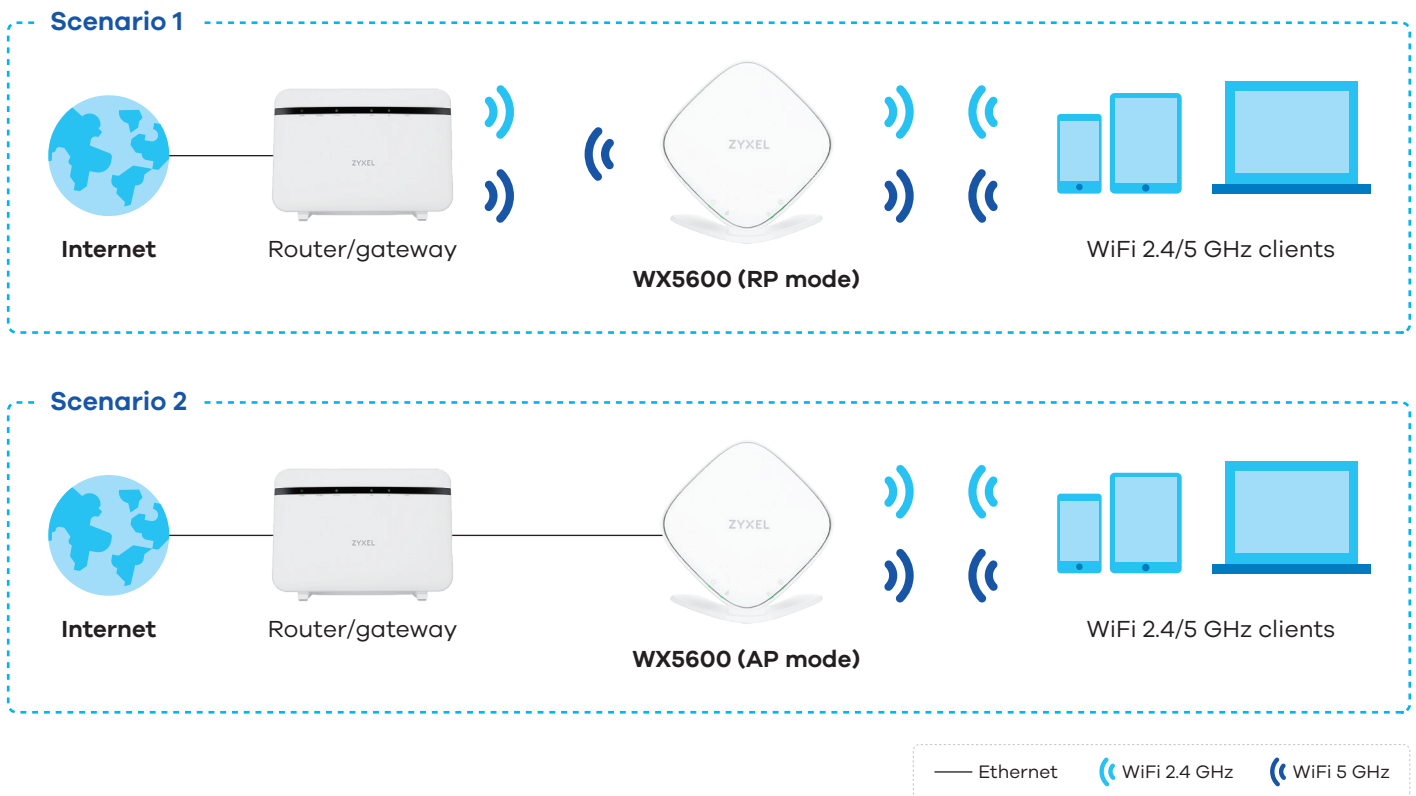
- CE
- Safety
- ErP

## Package contents

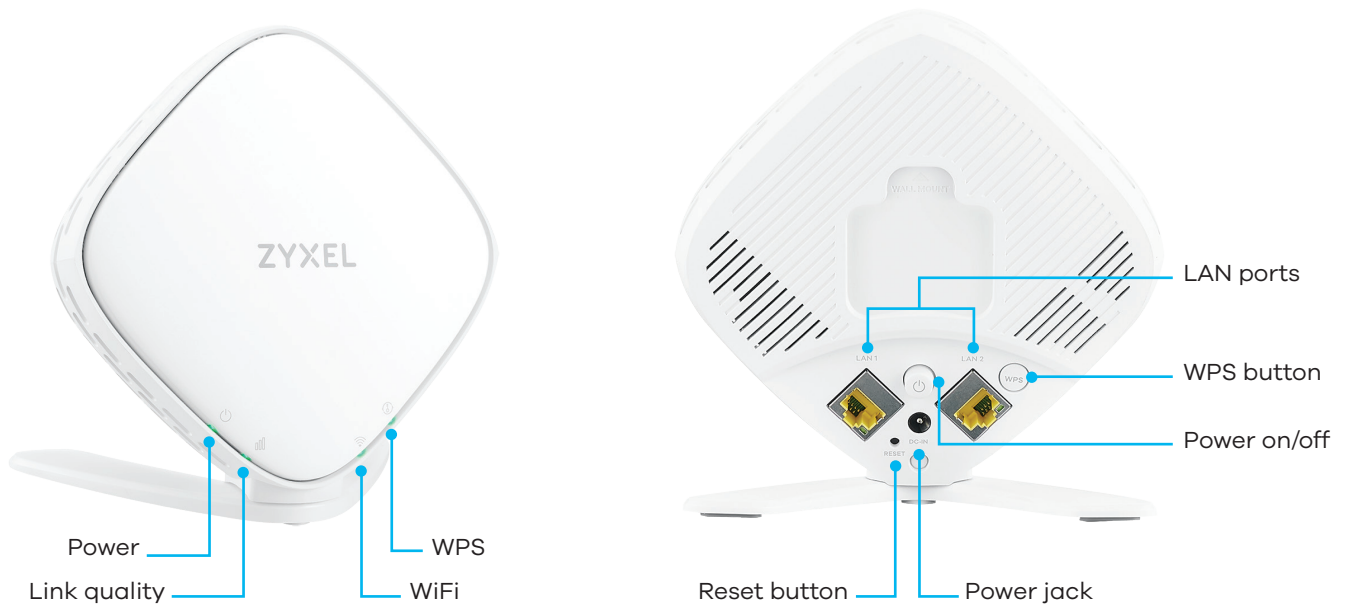
- Wireless bridge
- Power adapter
- Ethernet cable
- Quick Start Guide

\*: The maximum wireless data is derived from IEEE standard 802.11 specifications. Actual data transfer rate will vary from network environment including: distance, network traffic, building site materials/construction, interference from other wireless devices, and other adverse conditions.

## Application diagram



## Hardware interface





For more product information, visit us on the web at <https://service-provider.zyxel.com>

Copyright © 2022 Zyxel and/or its affiliates. All rights reserved.  
All specifications are subject to change without notice.



Datasheet [WX5600-T0](#)



28/06/22